

LAGOS COMMODITIES AND FUTURES EXCHANGE

2021 CAPITAL MARKET COMMITTEE MEETING



AKIN AKEREDOLU-ALE

Managing Director/CEO

April 2021

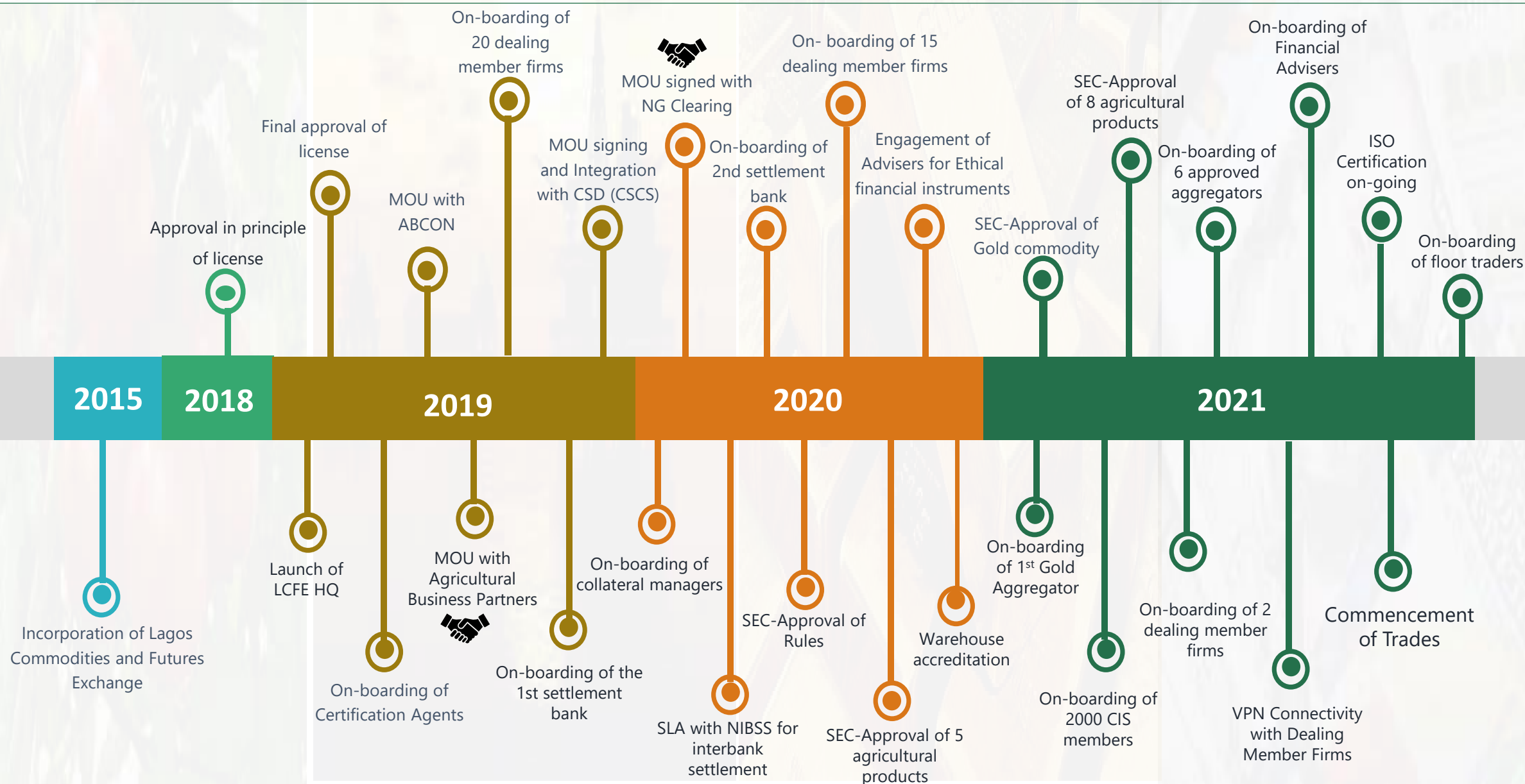


LAGOS COMMODITIES
& FUTURES EXCHANGE

OUR JOURNEY SO FAR

LCFE's Milestones

2





LCFE FOOTPRINT



COMMISSIONING OF THE EXCHANGE

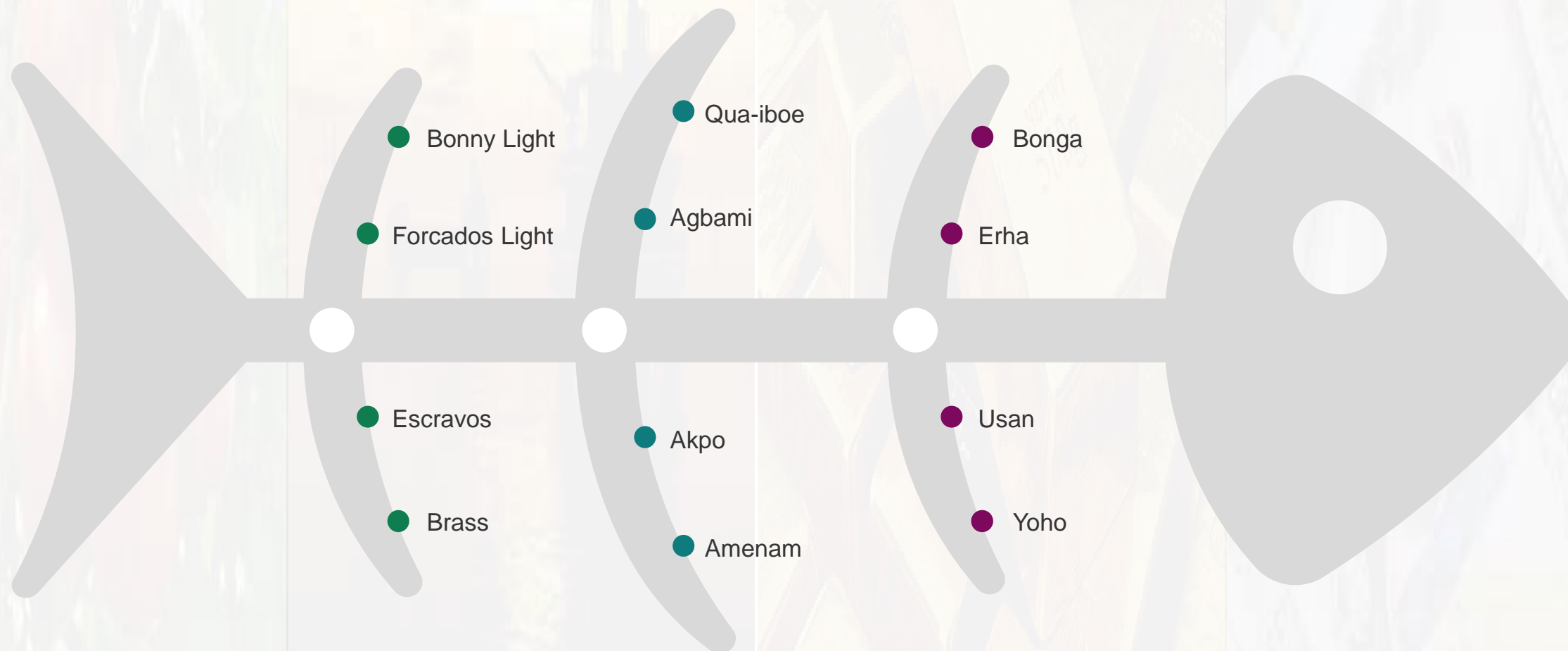
The Exchange was set to Commission in 2020 prior to commencement of trading operations, however the pandemic forced the Exchange to change course.

The new tentative Commissioning date for the Exchange has been set to occur 1 year post commencement of trading operations.



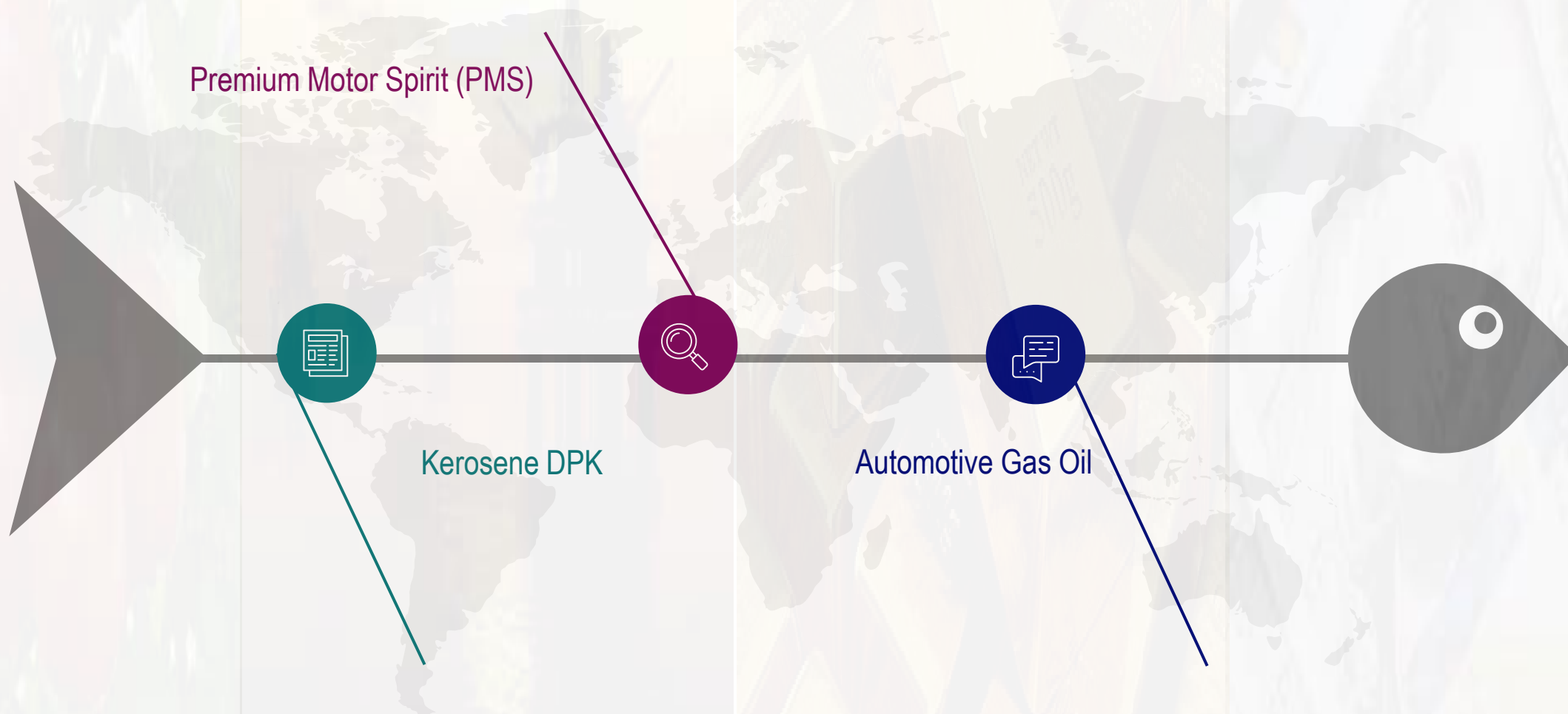
CRUDE OIL ASSETS

On-going process for Crude Oil Specification



REFINED PRODUCTS

On-going process for refined products specification



UPCOMING EVENTS

**Listing of 5,000
Barrels of Crude
Oil instruments**

**Listing of
12,000 barrels of
crude oil instruments**

**Listing of 4.4Billion
Naira Gold CBIs.**

**Listing of 1.5 Billion Tranche of 22Billion
Naira Agricultural
Commodity Backed Instruments (CBI)**

ISSUES FOR CMC DELIBERATION

Policy makers need to consider the degree to which the pandemic -induced disruptions are likely to be short-lived or lasting in regulating their policy responses. Short-lived shocks can be safeguarded by temporary macroeconomic incentives; lasting shocks require long-term adjustments to a new economic reality



Commend progress on conclusive guidelines on Crowdfunding and crowdfunding regulation as may be embedded in the (digital) Commodities Exchange ecosystem



Progress conclusive guidelines on Cryptocurrencies / Blockchain technology and regulation of activities as may also be embedded in commodities trading 'track and trace'



Tangible support and participation of CMO stakeholders in marketing, training and knowledge sharing program initiatives to provide continued enlightenment of Commodity Exchange operations and its dynamics





LAGOS COMMODITIES
& FUTURES EXCHANGE

Thank you

1st Floor, Niger House, UAC building, 1-5 Odunlami Street,
Marina, Lagos, Nigeria. info@lcfeng



+234 915 000 9000
+234 915 000 8000



+234 915 000 4000
info@lcfeng

